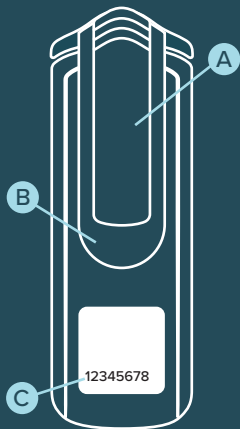


Front



Back



**A** Clip

**C** Serial number

**B** Rotating clip mount

For more information, visit [www.instadose.com](http://www.instadose.com)

## Instadose® Dosimeter

Instadose® radiation monitoring technology has revolutionized the way radiation exposure is captured, read and reported.

Instadose® USB enables dose reads to be performed immediately from any computer with internet access. Simply connect the Instadose® dosimeter into the USB port and login to our secure account program ([instadose.com](http://instadose.com)). Best of all, you keep your dosimeter – No more dosimeter collecting and redistributing new dosimeters every wear period!

## Care for Your Dosimeter

Extreme temperatures (high or low) may permanently damage internal components. Do not leave outside or in hot car. If dosimeter gets too hot or cold, transmission is not possible until it cools down and recovers to room temperature.



Do not allow dosimeter to overheat.



Do not allow dosimeter to freeze.



Do not immerse dosimeter in water.

## Setting up the Dosimeter

### 1 Sign in to instadose.com

An account administrator must first sign into instadose.com and select 'Users' under the Manage Section.

### 2 Add Wearer and Fill Out Information

The account administrator will click 'Add User' at the bottom of the list, then complete the required information and assign the dosimeter to the wearer.

### 3 Download and Install Software

Next, software must be downloaded on the computer(s) that will be used to read/transmit dose reads from the Instadose® dosimeter. Click 'Download Software' under the Manage Section and run the installation wizard. \*Please make sure that your web browser allows pop ups from instadose.com.

### 4 Connect to Computer

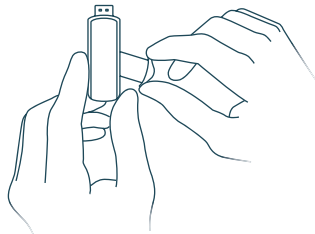
Connect the Instadose® dosimeter to the USBport of the computer.

### 5 Initialize Dosimeter

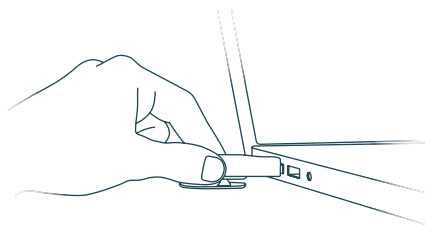
Click 'Initialize Device' under the Manage Section.

## Capturing Dose Reads

### 1 Pull the clip to the side to reveal the USB connection on the instadose® Dosimeter.



### 2 Connect the dosimeter to the USB-port of the computer and use the Instadose® software to perform a dose read.



For more information, visit [www.instadose.com](http://www.instadose.com)